

\$4000.00 / Monthly - PH1 - 4085 PARKSIDE VILLAGE DR

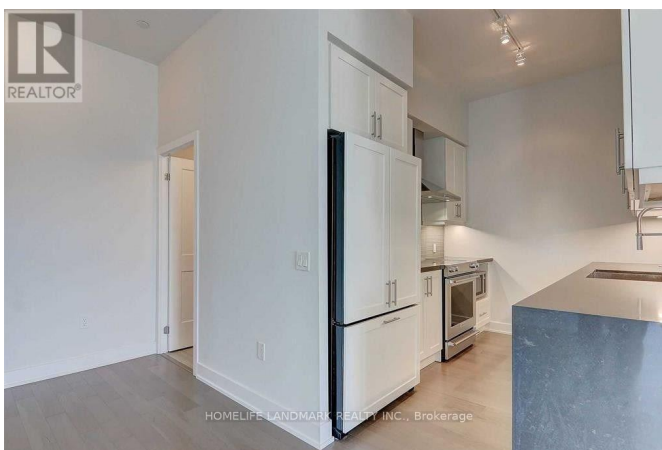
Listing ID: W8312102

\$4000.00 / Monthly

3 Bedrooms, 2 Bathrooms Single Family

PH1 - 4085 PARKSIDE VILLAGE DRIVE,
Mississauga, Ontario, L5B0K9

Beautiful Unobstructed View! 3 Bedroom 2
Bathroom Penthouse In Central
Mississauga. High Quality Finishes.
Spacious And Functional Layout. 2nd/3rd
Bedrooms With Access To Wrap Around
Balcony. Walking Distance To Square One,
Library, Celebration Square. Easy Access
To Go Station, Major Hwys. **** EXTRAS
**** Existing Appliances. 2 Parking Spots.
Tenants Pay All Utilities(Provident). Tenant
Insurance Required. (id:54154)



MLS®, REALTOR®, and the associated logos are trademarks of The Canadian Real Estate Association

Data Provided by: Toronto Regional Real Estate Board

Last Modified: 14/05/2024 12:42:49 AM

Listing Office: HOMELIFE LANDMARK REALTY INC.