

# \$599,000 - 104 - 4205 SHIPP DR DRIVE

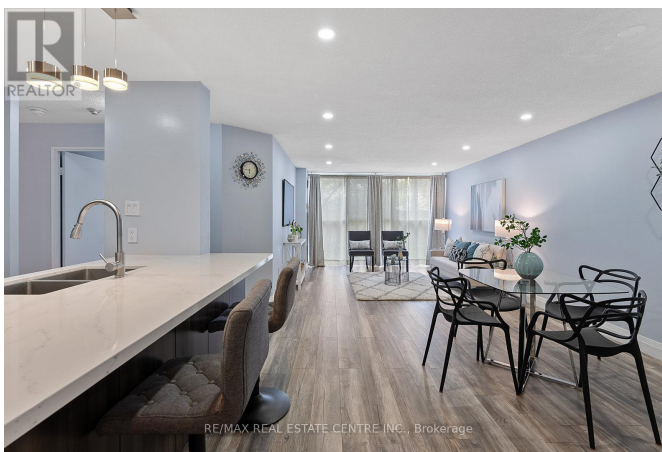
**Listing ID: W8305710**

**\$599,000**

2 Bedrooms, 2 Bathrooms Single Family

104 - 4205 SHIPP DR DRIVE, Mississauga,  
Ontario, L4Z2Y9

Completely Renovated! Just Move-In And  
Enjoy Bright & Large 1000+ Square Foot,  
Open Concept, Ground Floor Condo! Great  
Open Concept Layout With 2 Large  
Bedrooms & 2 Full Baths! Plenty Of  
Natural Lights Throughout Floor To Ceiling  
Windows! All Utilities Included! Highly  
Desired Area, Walk To Square One,  
Celebration Square & Transportation,  
Access To 403 & 401. \*\*\*\* EXTRAS \*\*\*\*  
Stainless Steel Appliances (Fridge, Stove,  
B/I Dishwasher), Washer, Dryer, 1 Parking  
Space, All Utilities! (id:54154)



MLS®, REALTOR®, and the associated logos are trademarks of The Canadian Real Estate Association

Data Provided by: Toronto Regional Real Estate Board

Last Modified: 14/05/2024 12:40:00 AM

Listing Office:RE/MAX REAL ESTATE CENTRE INC.