

# \$3000.00 / Monthly - 1407 - 4085 PARKSIDE VILLAGE DRIVE

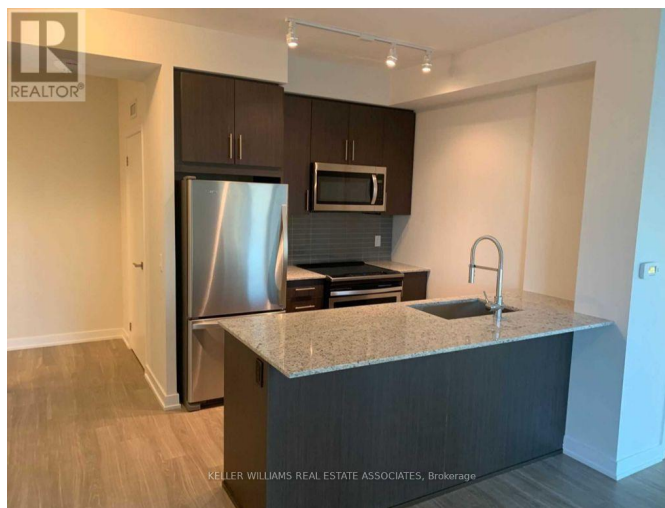
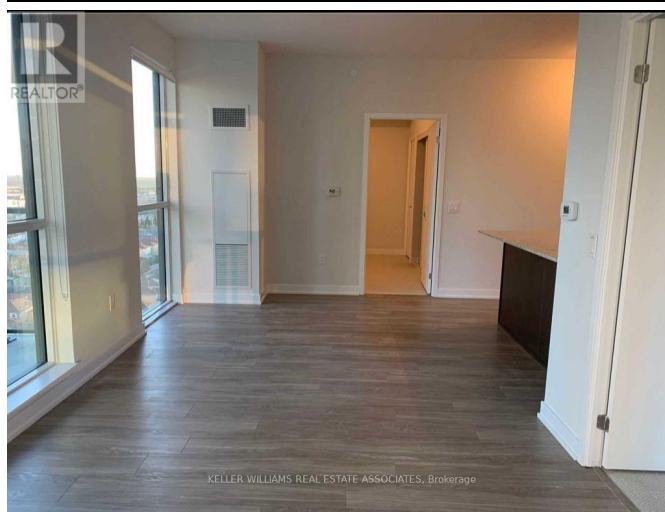
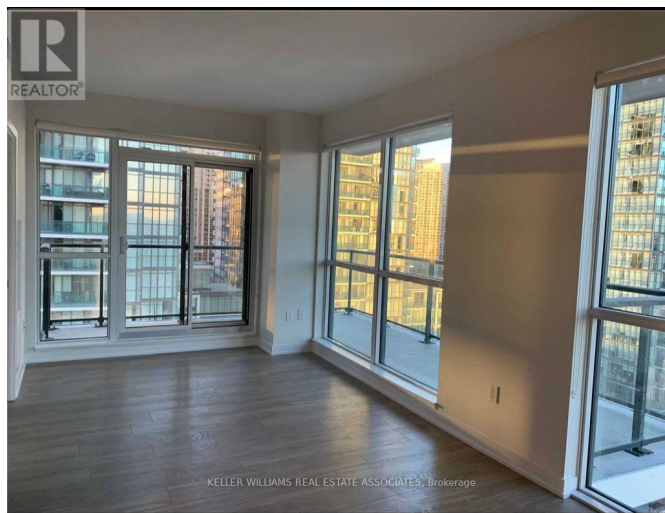
**Listing ID: W8279674**

**\$3000.00 / Monthly**

2 Bedrooms, 2 Bathrooms Single Family

1407 - 4085 PARKSIDE VILLAGE  
DRIVE, Mississauga, Ontario, L5B0K9

Located in the Heart of Mississauga,  
Modern Corner Unit, Spacious & Bright 2  
Bedroom / 2 Full Bathrooms. 10ft Ceilings,  
Open Concept Unit with 784 Sqft Of Living  
Space + Wrap Around 165 Sqft Balcony.  
Functional Floor Plan W/ Stainless Steel  
Appliances And Granite Countertops.  
Primary Bedroom With 4 Pc En-Suite  
Bathroom. Large 2nd Bedroom. 1 Parking  
Spot + 1 Locker Included. Easy Access to  
Hwy 403, QEW, 410 & 401. Access to high  
end Amenities! (id:54154)



MLS®, REALTOR®, and the associated logos are trademarks of The Canadian Real Estate Association

Data Provided by: Toronto Regional Real Estate Board

Last Modified: 14/05/2024 12:32:05 AM

Listing Office: KELLER WILLIAMS REAL ESTATE ASSOCIATES