

\$2600.00 / Monthly - #3610 -3975 GRAND PARK DR

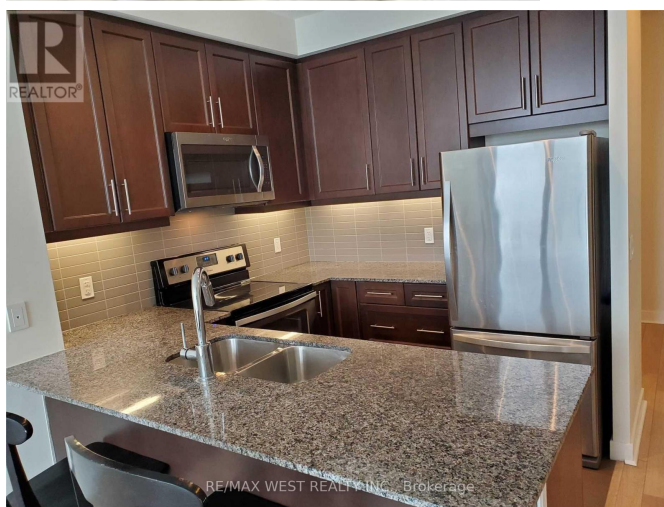
Listing ID: W8268100

\$2600.00 / Monthly

2 Bedrooms, 1 Bathrooms Single Family

#3610 -3975 GRAND PARK DR,
Mississauga, Ontario, L5B4M6

Move In And Enjoy The Sun Rise Shine East View Seeing Toronto Skyline. Clean 1 Bedroom & Den Unit Features Hardwood Floors Thru-Out, Spacious Kitchen With Centre Island/Breakfast Bar, Granite Counters And Stainless Steel Appliances. Close To All Amenities, Major Highways, Bus Terminals, Public Transit, Shops, Restaurants, Central Library, Square One Mall, Sheridan College, City Centre & Ymca. Welcome To Grand Park 2 Condominium Residences In Downtown Mississauga. No Pets & Non Smokers please. **** EXTRAS **** Stainless Steel Appliances-Fridge, Stove, B/I Dishwasher, B/I Microwave. Clothes Washer & Dryer. Windows Covering. One Parking & Locker Incl. Tenant Pays Hydro. Key Deposit \$300. (id:54154)



MLS®, REALTOR®, and the associated logos are trademarks of The Canadian Real Estate Association

Data Provided by: Toronto Regional Real Estate Board

Last Modified: 24/04/2024 07:29:09 PM

Listing Office: RE/MAX WEST REALTY INC.