

\$2600.00 / Monthly - #PH10 -330 BURNHAMTHORPE RD

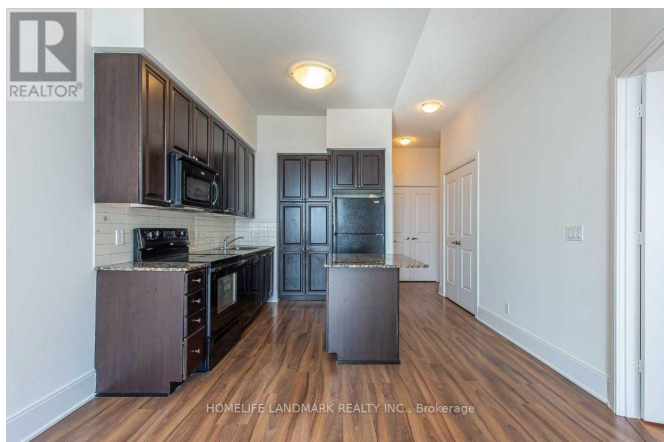
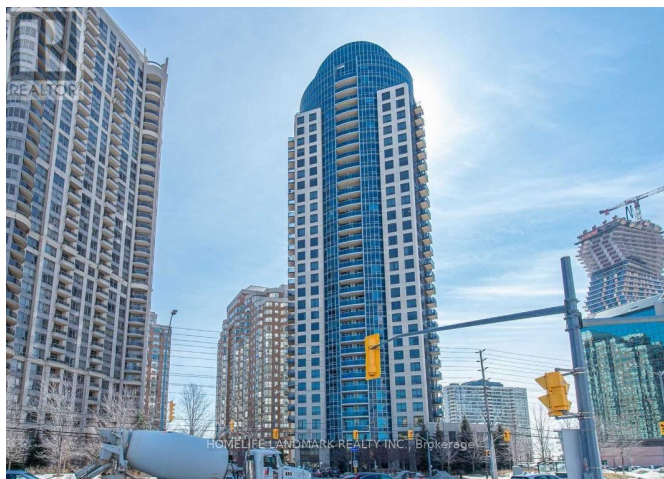
Listing ID: W8268014

\$2600.00 / Monthly

2 Bedrooms, 2 Bathrooms Single Family

#PH10 -330 BURNHAMTHORPE RD W,
Mississauga, Ontario, L5B0E1

Rare To Find In Luxury Ultra Ovation Tower, Top Penthouse Floor (33th Floor). Open Concept Layout With 9Ft Ceilings, Combined Living/Dining Room With Walk Out To Large Balcony. Carpet Free. Great Size Of 1 Bedroom Plus 1 Den With 1 Master On-Suite And Extra 1 Bathroom. Den Has Its Own Door Could Be A 2nd Bedroom. Incredible City And Lake Views From Balcony And Bedroom. Minutes Away From Square One Shopping Mall, Sheridan College, Public Transit, T&T. **** EXTRAS **** Condo Amenities Include 24Hr. Concierge, Security System, Indoor Pool, Virtual Golf, Guest Suites, Games Room, Party Room. (id:54154)



MLS®, REALTOR®, and the associated logos are trademarks of The Canadian Real Estate Association

Data Provided by: Toronto Regional Real Estate Board

Last Modified: 24/04/2024 07:29:08 PM

Listing Office: HOMELIFE LANDMARK REALTY INC.