

\$3200.00 / Monthly - #1008 -1140 PARKWEST PL

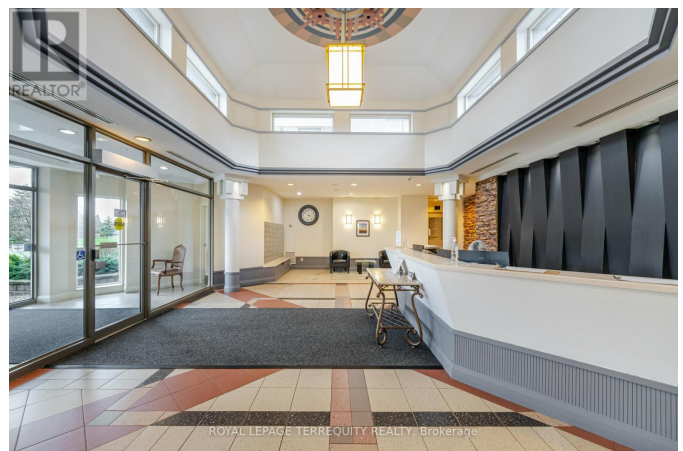
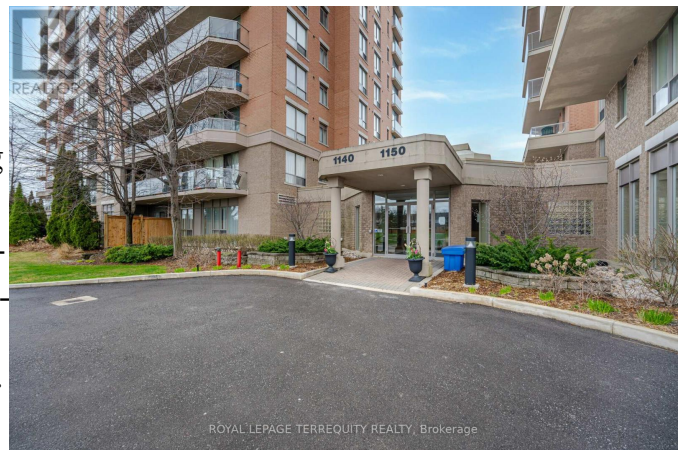
Listing ID: W8238446

\$3200.00 / Monthly

2 Bedrooms, 2 Bathrooms Single Family

#1008 -1140 PARKWEST PL, Mississauga,
Ontario, L5E3K9

Spacious and bright, 2-bed, 2-bath suite with large windows and fantastic unobstructed views of Toronto skyline and Lake Ontario. Functional 1,000+ sf layout features floor to ceiling windows and sliding glass doors to private 2 balconies and gas line for bbq. Tons of storage including walk-in closet in primary bedroom and large walk-in pantry with custom built - in shelving. Quiet, well-maintained building has 24-hour concierge, fitness room, party room, library, landscaped outdoor spaces. Steps to parks and walking trails, schools, rec centre, the lake, port credit, shopping, restaurants. **** EXTRAS **** Unit comes with 2 side by side parking spots (id:54154)



MLS®, REALTOR®, and the associated logos are trademarks of The Canadian Real Estate Association

Data Provided by: Toronto Regional Real Estate Board

Last Modified: 16/04/2024 03:27:59 PM

Listing Office:ROYAL LEPAGE TERREQUITY REALTY