

\$779,900 - 9 - 2380 BROMSGROVE ROAD

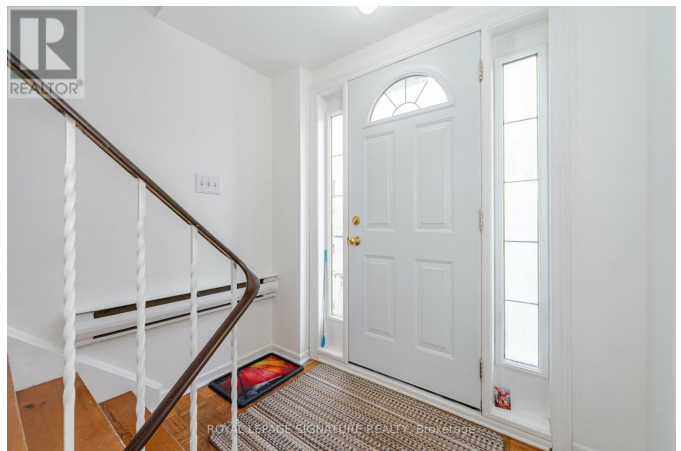
Listing ID: W8206694

\$779,900

4 Bedrooms, 2 BathroomsSingle Family

9 - 2380 BROMSGROVE ROAD,
Mississauga, Ontario, L5J4E6

Beautiful 3 Bedroom 2 Bath Condo
Townhouse In Sought After Clarkson
Awaits You! This Spacious Unit Offers An
Open Concept Living & Dining Room With
Large Eat In Kitchen And Walk Out To
Yard. Freshly Painted Throughout. All
Bedrooms Have Large Closets And Tons Of
Sunlight! A Must See! **** EXTRAS ****
Low Maintenance Fees! Nearby All
Amenities, GO Train & Clarkson REC
Centre. See It First Before It Is Gone!
(id:54154)



MLS®, REALTOR®, and the associated logos are trademarks of The Canadian Real Estate Association

Data Provided by: Toronto Regional Real Estate Board

Last Modified: 14/05/2024 12:14:01 AM

Listing Office:ROYAL LEPAGE SIGNATURE REALTY